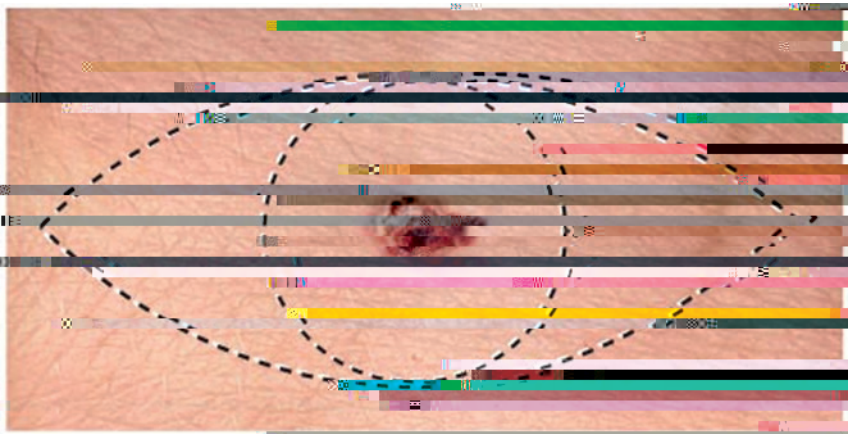
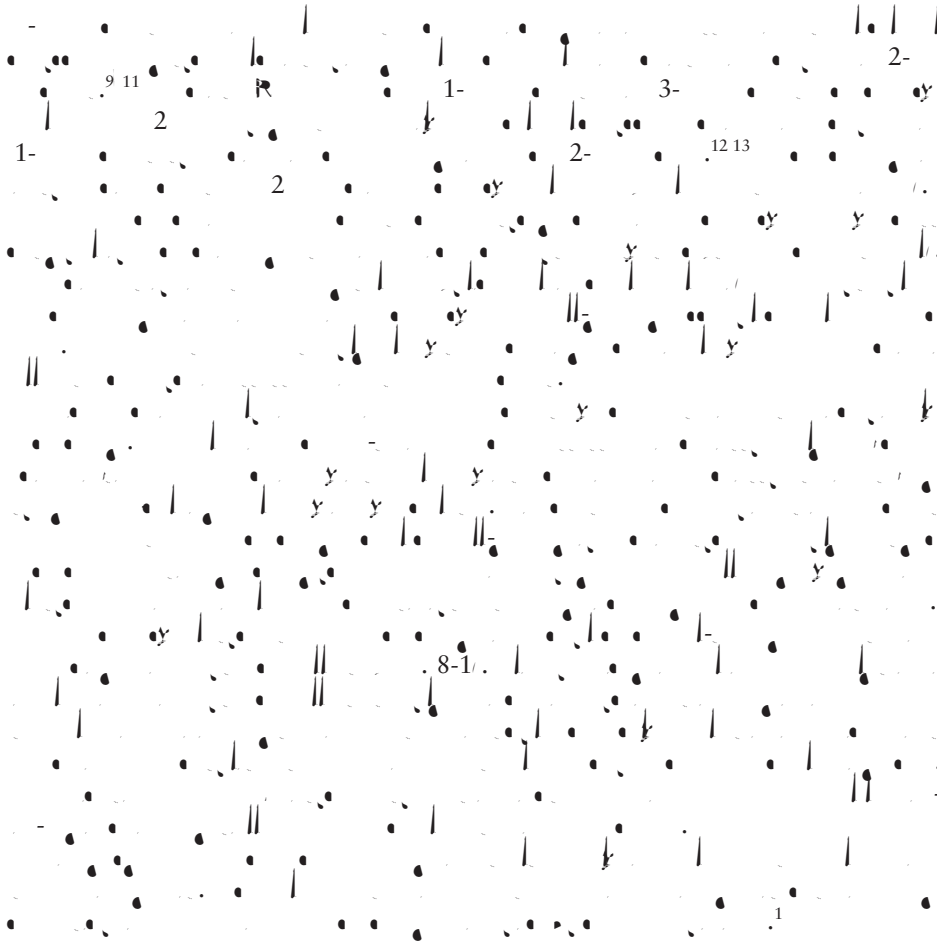


The image shows a musical score for piano, consisting of multiple staves. The notation includes notes, rests, and various markings. Key annotations include:

- Staff 1: 1.0 , $10y$, R , y , 2 , 1 , 2 , $1-3-$
- Staff 2: 1 , 2 , $1-$, $2-$, y
- Staff 3: $2-$, 1 , 2 , $1-$, $2-$, y
- Staff 4: 31.3 , 9 , $2-$, n , 3 , $8.$, 8 , $y-$, $1-$, n , 302
- Staff 5: $1-$, $1-$, 19 , y , y
- Staff 6: $2-$, $2-$, $1-$, $2-$, $2-$



-1 Creation of a longitudinally oriented fusiform ellipse for melanoma wide excision.

