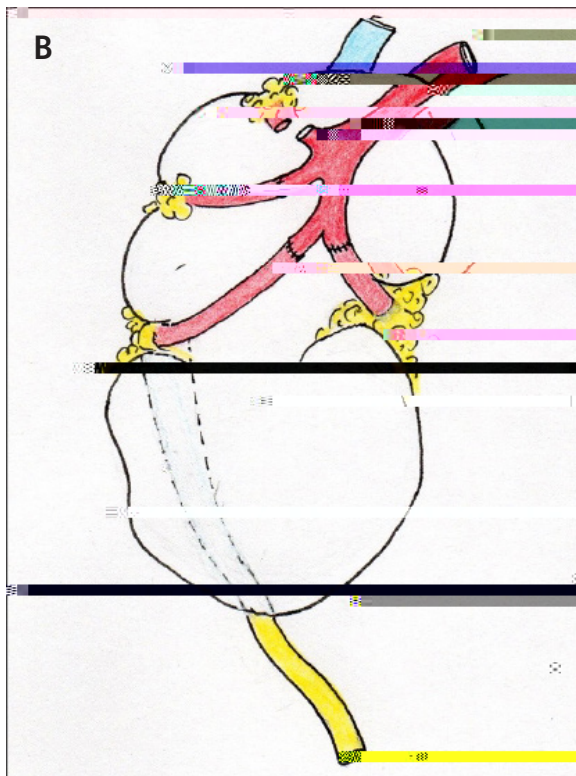
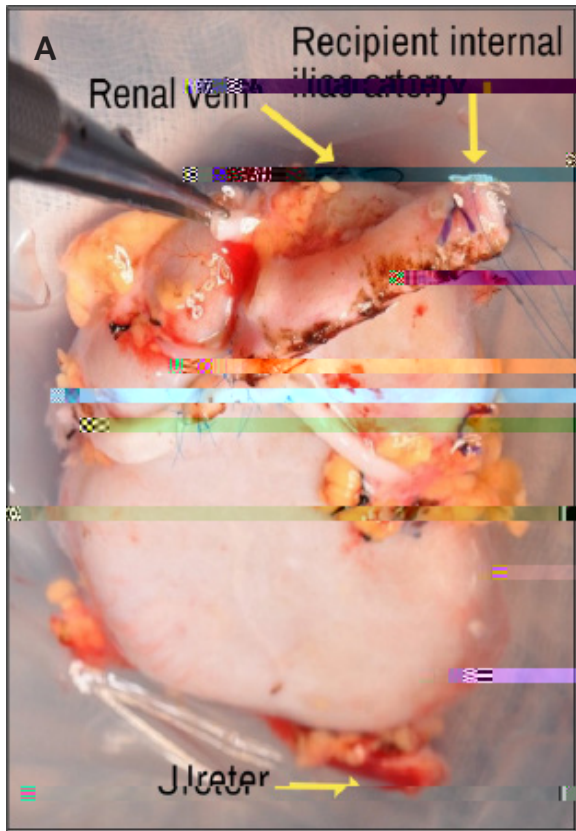






**F** 2. Renal Artery Revascularization in a Patient with



A

7.0, 36, 26, 4

P 6.0

P 7.0

R (F 3). A

P (SGF)

(0.60-0.75)

250

242 μmol/L. A

119 uM/L GFR 60

113/69 H

90 μM/L



C

Case 1: 1-1-2023

11. B... AA, T... KF... R. E... ( ) -  
*Gynecol Oncol.* 2005;96(3):873-875. :10.1016/...  
 .2004.11.049
12. G... PJ, M... M, H... , N... C, L...  
 JP, A... N. K...  
*J Am Coll Surg.* 2009;209(1): 1-3. :10.1016/...  
 .2009.03.019
13. L J, N... S, P... A, ...  
 :  
*Transplantation.* 2006;82(9):1241-1242.  
 :10.1097/01...0000232668.32110.77
14. P... G, C... , L... D, F... J, L G...  
 :T... .2019  
*Transplantation.* 2010;89(9):1113-  
 1116. :10.1097/TP0 013 3181 54 8